



**OCCUPATIONAL
REGULATION 2021.**





THE CASE FOR CHANGE.



While many of New Zealand's engineers are highly professional, our system for regulating the profession is flawed. Too many engineers operate outside of a regulatory regime, it is hard to hold engineers to account when standards slip, and there is no means of ensuring engineers who practice in particularly high risk fields are competent.



Ministry of Business, Innovation & Employment (May 2021).

OUR PRINCIPLES.

A REGULATORY FRAMEWORK SHOULD:

- BE SIMPLE TO UNDERSTAND AND OPERATE.
- PITCH GOVERNMENT OVERSIGHT AT THE RIGHT LEVEL.
- WORK FOR THE WHOLE PROFESSION.

WHAT IS MBIE PROPOSING?

1 REGISTRATION

2 LICENSING

3 SYSTEM



REGISTRATION.



Under this proposal, all persons providing professional engineering services would need to be registered. This will include engineers working in the major disciplines of chemical, civil, electrical, and mechanical engineering and their subbranches.



Ministry of Business, Innovation & Employment (May 2021).

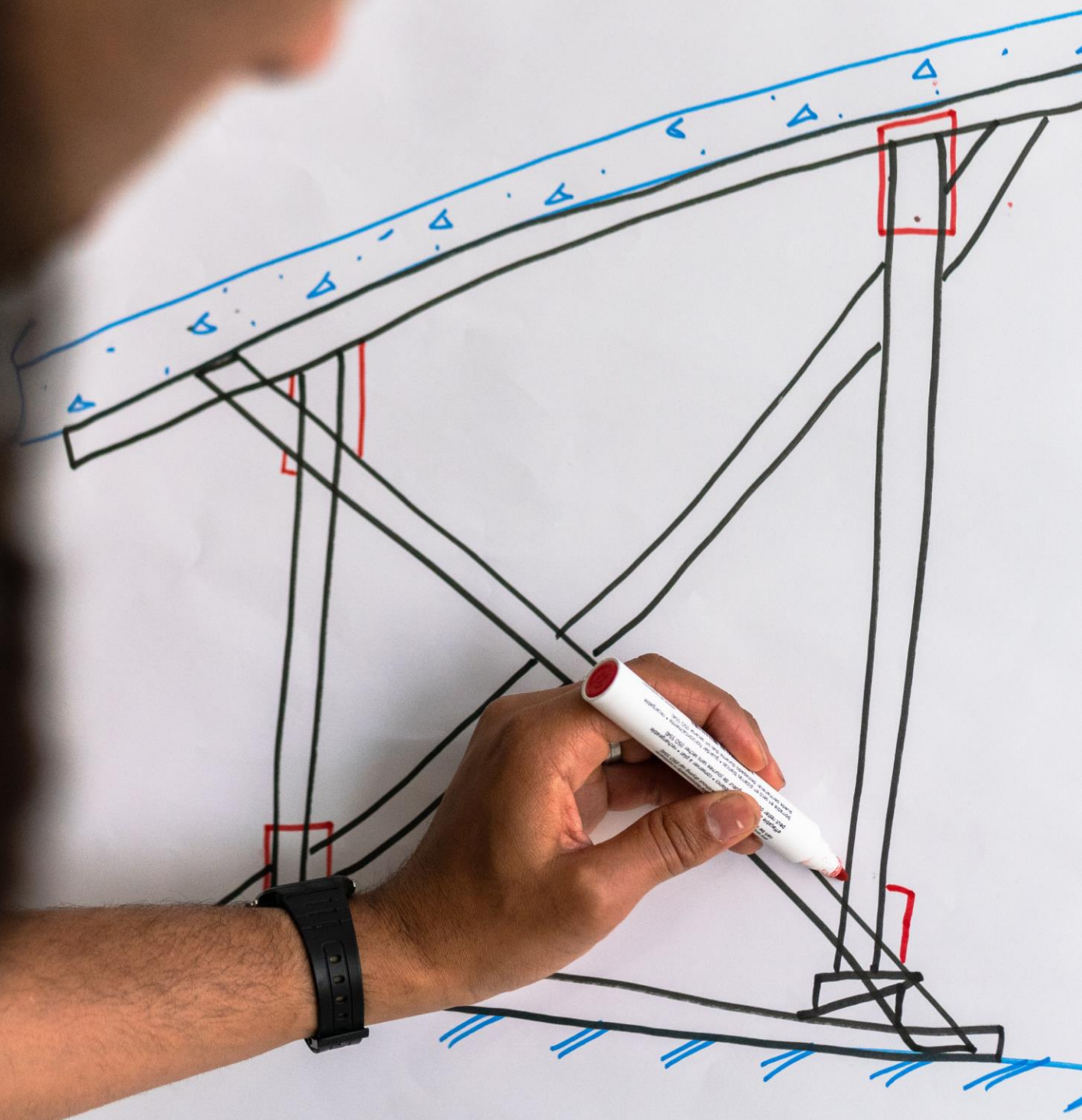
PROFESSIONAL ENGINEER?

WORKING DEFINITION (PAGE 20):

Any person who provides professional engineering services. By this we mean any act of planning, designing, composing, evaluating, advising, reporting, directing supervising, or managing, that requires the application of engineering principles and judgement and concerns the safeguarding of life, health, property, economic interest, the public welfare or the environment.

LEVEL OF REGISTRATION.

MBIE wants registration to be set at a level that ensures all professional engineers, including those newly qualified, are included.



OUR VIEW.

SUPPORT mandatory registration.

CONSIDER the bar for registration should be higher than new graduates.

LICENSING.

A close-up, side-view photograph of a person's hands typing on a silver laptop keyboard. The person is wearing a thick, textured brown knit sweater. On their left wrist, they have a black watch and several gold-colored bangles. The laptop is open on a wooden desk. In the background, another laptop screen is visible, showing a bright white page. The overall lighting is warm and soft, creating a professional yet cozy atmosphere.

“

We propose to set up a framework to restrict certain engineering practice fields to engineers licensed in that field... This would ensure that only competent practitioners with relevant expertise could provide engineering services.

”

Ministry of Business, Innovation & Employment (May 2021).

OUR VIEW.

SUPPORT

SUPPORT restricting certain engineering practice fields to engineers who are licensed.

SYSTEM.



GOVERNANCE

MINISTER

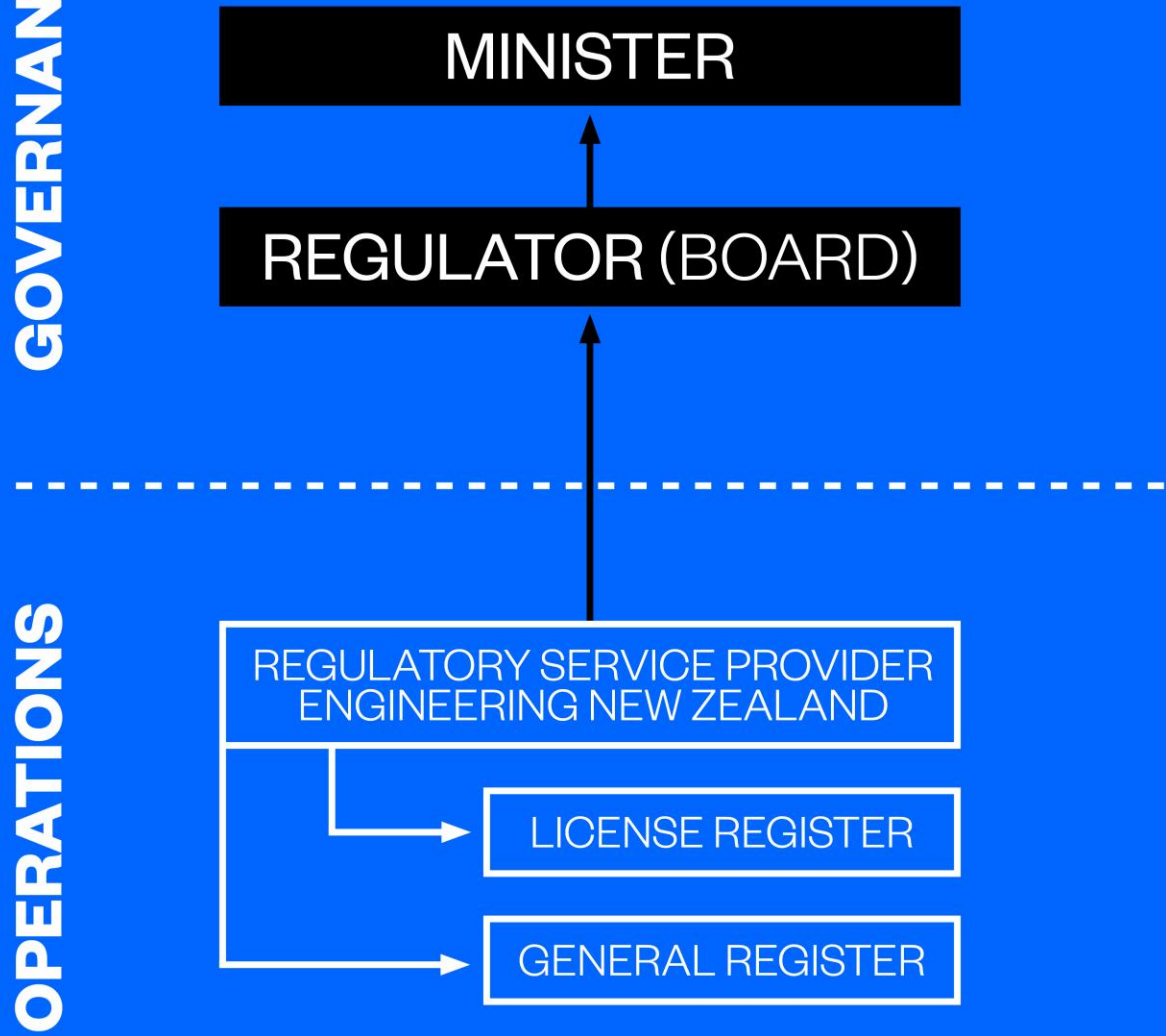
REGULATOR (BOARD)

OPERATIONS

REGULATORY SERVICE PROVIDER
ENGINEERING NEW ZEALAND

LICENSE REGISTER

GENERAL REGISTER



OUR VIEW.

SUPPORT

SUPPORT the system structure and Engineering New Zealand's ongoing role in the regulation of engineers.

DISCUSSION.



NEXT STEPS.

ONE

Make a submission to MBIE.

TWO

**Get in touch to help us
finalise our submission.**

A person is standing on the peak of a mountain in the foreground, looking out over a vast landscape. The landscape features a large, blue lake or reservoir in the middle ground, surrounded by rolling mountains and hills. The sky is clear and blue, suggesting a bright day. The overall scene is serene and majestic.


THANKS.